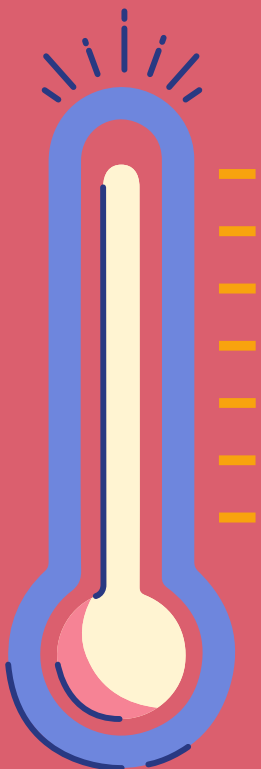




Cal/OSHA's *Outdoor* Heat Illness Prevention Standard

ALWAYS REQUIRED

- **Written heat illness prevention program**, including how the employer will:
 - **Monitor the temperature**; train supervisors on how to check weather reports and how to respond to weather advisories
 - **Provide first aid or emergency response** to any workers showing heat illness signs or symptoms, including contacting emergency medical services
 - **Closely observe new workers and newly assigned workers working in hot areas** during a 14-day acclimatization period, as well as all workers working during a heat wave
 - **Provide training** to both workers and supervisors
- **Cool drinking water** free and easily accessible (one quart per hour per employee per hour)
- **Shade must be available** on demand; extra rest breaks must be provided if requested



REQUIRED AT:

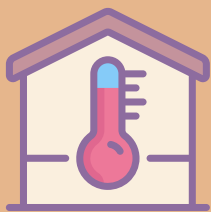
80° and above

- Shade must be up
- Cool down area with no direct sunlight large enough for everyone to sit
- Offer preventative cool down breaks and monitor workers

Over 95°, high hazard procedures* including:

- Observing and communicating effectively with workers
- Reminding workers to drink water and take cool-down rest breaks
- Pre-shift meetings
- 10 minute breaks every 2 hours

* For workers in agriculture, construction, landscaping, oil & gas extraction, or transportation industries



Cal/OSHA's *Indoor* Heat Illness Prevention Standard

ALWAYS REQUIRED

- **Written heat illness prevention program**, including how the employer will:
 - **Monitor the temperature**; train supervisors on how to check weather reports and how to respond to weather advisories
 - **Provide first aid or emergency response** to any workers showing heat illness signs or symptoms, including contacting emergency medical services
 - **Closely observe new workers and newly assigned workers working in hot areas** during a 14-day acclimatization period, as well as all workers working during a heat wave
 - **Provide training** to both workers and supervisors
- **Cool drinking water** free and easily accessible (one quart per hour per employee per hour)
- **Rest breaks** must be provided if requested



REQUIRED AT:

82° and above

- Free, fresh, potable water close by (one quart per hour per employee per hour)
- At least one cool down area under 82° away from heat sources
- Offer preventative cool down breaks and monitor symptoms

87° (or 82° for workers with clothing that restricts heat removal or high radiant heat areas)

- Implement control measures, starting with solutions that directly reduce the hazard (such as installing air conditioning or fans)
- Provide personal protective equipment (PPE), such as cooling vests

